

# SAVANNAH AT TURTLE ROCK

A SUBDIVISION OF PARCEL "C", TURTLE ROCK, UNIT 1, PLAT BOOK 36, PAGES 34, 34A-34T  
IN SECTION 25, TOWNSHIP 37 SOUTH, RANGE 18 EAST, SARASOTA COUNTY, FLORIDA

PLAT BOOK 37 PAGE 25B  
SHEET 3 OF 4 SHEETS

BOUNDARY LINE CURVE TABLE						
NO.	RADIUS	DELTA	ARC	TANGENT	CHORD	CHORD BEARING
1	27.00'	23°37'08"	11.13'	5.65'	11.05'	N.39°26'09"E
2	60.00'	57°03'43"	59.76'	32.62'	57.32'	N.00°54'17"W
3	37.00'	123°04'36"	79.48'	68.25'	65.06'	S.32°06'09"W
4	18.50'	125°03'45"	40.38'	35.59'	32.83'	N.31°06'35"E
5	19.00'	81°01'41"	26.87'	16.24'	24.69'	S.09°05'33"W
6	45.00'	42°14'20"	33.17'	17.38'	32.43'	S.70°43'33"W
7	29.00'	60°07'29"	30.43'	16.79'	29.05'	N.58°05'33"W
8	15.00'	72°37'21"	19.01'	11.02'	17.77'	S.64°20'29"E
9	250.00'	17°50'29"	77.85'	39.24'	77.53'	N.70°25'36"E
10	35.00'	32°25'41"	19.81'	10.18'	19.55'	N.79°51'48"W
11	75.00'	37°30'02"	49.09'	25.46'	48.22'	S.77°19'38"E
12	45.00'	50°50'54"	39.94'	21.39'	38.64'	N.84°00'04"W
13	60.00'	33°09'37"	34.73'	17.86'	34.24'	N.48°30'08"E
14	370.00'	37°49'56"	244.31'	126.80'	239.90'	N.02°54'10"W
15	75.00'	07°01'29"	9.20'	4.60'	9.19'	N.46°29'14"W
16	22.50'	79°22'22"	31.17'	18.67'	28.74'	S.10°18'47"W
17	370.00'	27°12'27"	175.70'	89.54'	174.05'	N.35°16'51"E
18	38.71'	38°58'51"	26.32'	13.69'	25.81'	S.29°24'39"W
19	1285.00'	00°42'02"	15.71'	7.86'	15.71'	N.60°39'53"E
20	25.00'	69°10'59"	30.19'	17.24'	28.39'	S.84°23'36"E
21	22.50'	79°26'15"	31.20'	18.69'	28.76'	N.89°31'14"W

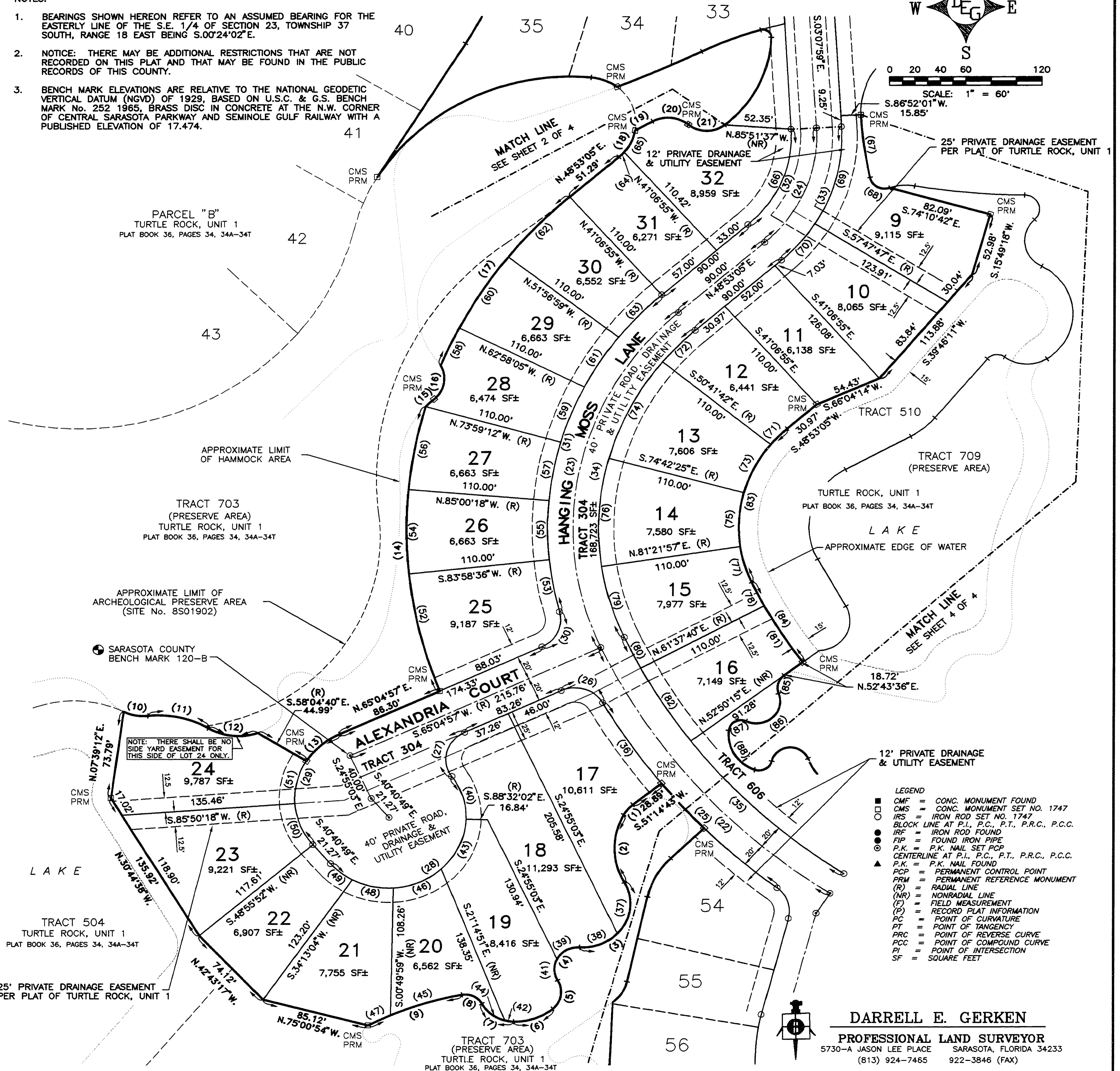
CENTERLINE CURVE TABLE						
NO.	RADIUS	DELTA	ARC	TANGENT	CHORD	CHORD BEARING
22	500.00'	32°05'15"	280.02'	143.79'	276.37'	N.40°57'41"W
23	240.00'	73°48'08"	309.14'	180.20'	288.21'	N.11°59'01"E
24	120.00'	52°01'04"	108.95'	58.55'	105.24'	S.22°52'33"W

RIGHT OF WAY LINE CURVE TABLE						
NO.	RADIUS	DELTA	ARC	TANGENT	CHORD	CHORD BEARING
25	520.00'	23°11'32"	210.49'	106.70'	209.05'	N.41°14'59"W
26	25.00'	85°15'50"	37.20'	23.01'	33.86'	S.72°17'08"E
27	25.00'	100°29'22"	43.85'	30.05'	38.44'	N.14°50'16"E
28	60.00'	174°43'36"	182.97'	1302.88'	119.87'	S.51°57'23"W
29	60.00'	105°45'46"	110.75'	79.28'	95.69'	N.12°12'04"E
30	25.00'	80°54'55"	35.31'	21.32'	32.44'	S.24°37'30"W
31	260.00'	64°43'03"	293.68'	164.74'	278.31'	N.16°31'33"E
32	100.00'	52°01'04"	90.79'	48.79'	87.70'	S.22°52'33"W
33	140.00'	52°01'04"	127.10'	68.31'	122.78'	S.22°52'33"W
34	220.00'	73°48'08"	283.38'	165.19'	264.19'	N.11°59'01"E
35	480.00'	32°05'15"	268.82'	138.03'	265.32'	N.40°57'41"W

LOT LINE CURVE TABLE						
NO.	RADIUS	DELTA	ARC	TANGENT	CHORD	CHORD BEARING
36	520.00'	09°06'04"	82.60'	41.39'	82.51'	N.34°12'15"W
37	37.00'	72°17'31"	46.68'	27.03'	43.65'	S.06°42'37"W
38	37.00'	50°47'05"	32.80'	17.56'	31.73'	S.68°14'55"W
39	18.50'	66°52'58"	21.60'	12.22'	20.39'	N.60°11'58"E
40	60.00'	35°52'23"	38.61'	20.00'	37.95'	S.16°58'13"E
41	18.50'	58°10'47"	18.79'	10.29'	17.99'	N.02°19'55"W
42	29.00'	14°01'38"	7.10'	3.57'	7.08'	N.81°08'28"W
43	60.00'	45°20'16"	47.48'	25.06'	46.25'	S.24°08'06"W
44	29.00'	46°05'50"	23.33'	12.34'	22.71'	N.51°04'44"W
45	250.00'	13°24'57"	58.54'	29.40'	58.40'	N.72°38'22"E
46	60.00'	39°59'23"	41.88'	21.83'	41.03'	S.66°47'55"W
47	250.00'	04°25'32"	19.31'	9.66'	19.30'	N.63°43'07"E
48	60.00'	31°32'04"	33.02'	16.94'	32.61'	N.77°26'22"W
49	60.00'	20°59'30"	21.98'	11.12'	21.86'	N.51°10'34"W
50	60.00'	36°31'07"	38.24'	19.80'	37.60'	N.22°25'15"W
51	60.00'	36°05'01"	37.79'	19.54'	37.17'	N.13°52'49"E
52	370.00'	15°47'44"	102.00'	51.33'	101.68'	N.13°55'16"W
53	260.00'	09°48'34"	44.51'	22.31'	44.46'	N.10°55'41"W
54	370.00'	11°01'06"	71.15'	35.69'	71.04'	N.00°30'51"W
55	260.00'	11°01'06"	50.00'	25.08'	49.92'	N.00°30'51"W
56	370.00'	11°01'06"	71.15'	35.69'	71.04'	N.10°30'15"E
57	260.00'	11°01'06"	50.00'	25.08'	49.92'	N.10°30'15"E
58	370.00'	05°21'17"	34.58'	17.30'	34.57'	N.24°21'16"E
59	260.00'	11°01'06"	50.00'	25.08'	49.92'	N.21°31'22"E
60	370.00'	11°01'06"	71.15'	35.69'	71.04'	N.32°32'28"E
61	260.00'	11°01'06"	50.00'	25.08'	49.92'	N.32°32'28"E
62	370.00'	10°50'04"	69.97'	35.09'	69.86'	N.43°28'03"E
63	260.00'	10°50'04"	49.16'	24.66'	49.09'	N.43°28'03"E
64	38.71'	08°29'13"	5.73'	2.87'	5.73'	S.44°38'28"W
65	38.71'	30°27'37"	20.58'	10.54'	20.34'	S.25°10'03"W
66	100.00'	52°01'04"	90.79'	48.79'	87.70'	S.22°52'33"W
67	315.00'	09°47'03"	53.79'	26.96'	53.73'	N.07°36'49"W
68	12.00'	97°09'45"	20.35'	13.60'	18.00'	N.61°05'13"W
69	140.00'	35°20'13"	86.34'	44.59'	84.98'	S.14°32'07"W
70	140.00'	16°40'51"	40.76'	20.52'	40.62'	S.40°32'39"W
71	110.00'	09°34'47"	18.39'	9.22'	18.37'	N.44°05'41"E
72	220.00'	09°34'47"	36.78'	18.43'	36.74'	N.44°05'41"E
73	110.00'	24°00'43"	46.10'	23.39'	45.76'	N.27°17'56"E
74	220.00'	24°00'43"	92.20'	46.79'	91.53'	N.27°17'56"E
75	110.00'	23°55'38"	45.94'	23.31'	45.60'	N.03°19'46"E
76	220.00'	23°55'38"	91.87'	46.62'	91.21'	N.03°19'46"E
77	110.00'	16°16'59"	31.26'	15.74'	31.16'	N.16°46'33"W
78	370.00'	03°27'17"	22.31'	11.16'	22.31'	N.26°38'41"W
79	220.00'	16°16'59"	62.52'	31.47'	62.31'	N.16°46'33"W
80	480.00'	03°27'17"	28.94'	14.48'	28.94'	N.26°38'41"W
81	370.00'	08°45'08"	56.52'	28.31'	56.46'	N.32°44'53"W
82	480.00'	08°45'55"	73.43'	36.79'	73.36'	N.32°45'17"W

TRACT LINE CURVE TABLE						
NO.	RADIUS	DELTA	ARC	TANGENT	CHORD	CHORD BEARING
83	110.00'	73°48'08"	141.69'	82.59'	132.10'	N.11°59'01"E
84	370.00'	12°12'24"	78.83'	39.56'	78.68'	N.31°01'15"W
85	13.00'	74°09'18"	16.83'	9.82'	15.68'	N.15°38'57"E
86	18.50'	137°03'08"	44.25'	47.03'	34.43'	S.47°05'52"W
87	9.50'	109°16'37"	18.12'	13.39'	15.49'	N.60°59'08"E
88	32.00'	75°28'48"	42.16'	24.77'	39.17'	N.31°23'35"W

- NOTES:
- BEARINGS SHOWN HEREON REFER TO AN ASSUMED BEARING FOR THE EASTERLY LINE OF THE S.E. 1/4 OF SECTION 23, TOWNSHIP 37 SOUTH, RANGE 18 EAST BEING S.00°24'02"E.
  - NOTICE: THERE MAY BE ADDITIONAL RESTRICTIONS THAT ARE NOT RECORDED ON THIS PLAT AND THAT MAY BE FOUND IN THE PUBLIC RECORDS OF THIS COUNTY.
  - BENCH MARK ELEVATIONS ARE RELATIVE TO THE NATIONAL GEODETIC VERTICAL DATUM (NGVD) OF 1929, BASED ON U.S.C. & G.S. BENCH MARK NO. 252 1965, BRASS DISC IN CONCRETE AT THE N.W. CORNER OF CENTRAL SARASOTA PARKWAY AND SEMINOLE GULF RAILWAY WITH A PUBLISHED ELEVATION OF 17.474.



- LEGEND
- C.M.F. = CONC. MONUMENT FOUND
  - C.M.S. = CONC. MONUMENT SET NO. 1747
  - I.R.S. = IRON ROD SET NO. 1747
  - B.L.O.C.K. = BLOCK LINE AT P.I., P.C., P.T., P.R.C., P.C.C.
  - I.R.F. = IRON ROD FOUND
  - F.I.P. = FOUND IRON PIPE
  - P.K. = P.K. NAIL SET
  - C.P.C. = CENTERLINE AT P.I., P.C., P.T., P.R.C., P.C.C.
  - P.K. = P.K. NAIL FOUND
  - P.C.P. = PERMANENT CONTROL POINT
  - P.R.M. = PERMANENT REFERENCE MONUMENT
  - (R) = RADIAL LINE
  - (NR) = NONRADIAL LINE
  - (F) = FIELD MEASUREMENT
  - (P) = RECORD PLAT INFORMATION
  - P.C. = POINT OF CURVATURE
  - P.T. = POINT OF TANGENCY
  - P.R.C. = POINT OF REVERSE CURVE
  - P.C.C. = POINT OF COMPOUND CURVE
  - P.I. = POINT OF INTERSECTION
  - SF = SQUARE FEET

**DARRELL E. GERKEN**  
PROFESSIONAL LAND SURVEYOR  
5730-A JASON LEE PLACE SARASOTA, FLORIDA 34233  
(813) 924-7465 922-3846 (FAX)